

Radio Controlled Recording System RCRS1A

An ultra-low-power, high-quality audio recorder with integrated AES-encrypted wireless telemetry and control link.

The system comprises one RCAR2A radio-controlled audio recorder module and one WMBU1A hand-held controller. It provides high-quality audio recording that can be controlled remotely, requiring just the addition of a microphone capsule.

The system is designed to be used in situations where recording needs to be started and stopped periodically but without direct access to the unit.

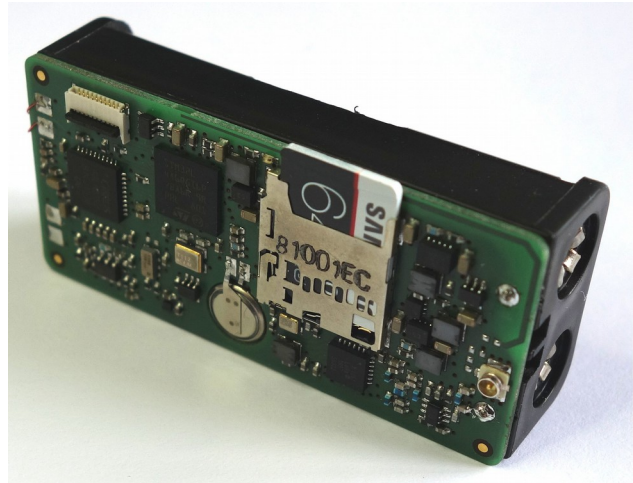
The RCAR1A recorder module is small. It is not much larger than the two standard AAA alkaline batteries from which it is powered.

It can record continuously for in excess of 200 hours and has a standby battery-life of at least 6 months¹.

In addition to the ON/OFF function, the WMBU1A controller provides the user with status information including battery condition (as remaining percent capacity) allowing the user to verify the condition of the remote system at any time.

Features

- ◆ High-Quality, Uncompressed Recording
- ◆ Linear 16-Bit Sampling at 22.05kHz⁴
- ◆ Very low Mic self-noise of 20dB(A) SPL
- ◆ Precision 1.5ppm battery-backed RTC
- ◆ 128GB media supported (REAF format)
- ◆ Secure Link using AES Encryption³
- ◆ Immune to RF attack
- ◆ Small remote-unit size
- ◆ Long Recording Time (>200 hours)
- ◆ Long Standby Time (>6 months¹)
- ◆ Custom RF Frequency available²
- ◆ 50m LOS range at -10dBm Tx Power
- ◆ 150m LOS range at +10dBm Tx Power
- ◆ Display of recorder state (On / Off)
- ◆ Display of remote battery condition
- ◆ Supplied pre-paired and ready to go
- ◆ Pairing can be changed if required
- ◆ Internal and External antenna options
- ◆ User selectable microphone capsule



RCAR2A Specifications (recorder unit)

Unless otherwise stated: Temp = 20°C, Battery = 2 x E92 AAA, Media = Samsung 64GB EVO, Microphone current ~ 260µA.

Module Size with batteries fitted (mm)	24.6 x 53 x 25
Battery-Life (standby)	>6 months ¹
Battery-Life (recording including mic)	>200 hours ¹
Sampling Rate	22.05kHz ⁴
Dynamic Range (A-weighted)	80dB(A)
Microphone Phantom Power Output	1.6 Volts

Note. Specifications are subject to change without notice.



WMBU1A Specifications (controller)

Unless otherwise stated: Temp = 20°C, Battery = 2 x E91 AA.

Size excluding antenna (mm)	38 x 24 x 109
Typical LOS Range (-10dBm power)	50m
Typical LOS Range (+10dBm power)	150m
Standard Operating Frequency	868MHz
Custom Frequency Range ² MHz	160 to 950

Note. Specifications are subject to change without notice.

1. Assuming 10 commands per day and 2 x E92 AAA batteries.
2. Custom frequency systems in this range are available to special order. Contact RHDC Services Ltd for more details.
3. The system's telemetry link uses a low bit-rate that does not support live audio monitoring.
4. Higher sampling-rate (44.1kHz) option is available.